

1950 Pontiac Installation Instructions

1. **Disconnect Battery.** Do not skip this step. Also, do not try to "test" the LED array by connecting the leads directly to your battery. Permanent damage will occur to the LED array if you fail to heed these steps.
2. Remove taillight housings from car.
3. Disassemble taillight housings.
4. Remove light bulb.
5. Pass the supplied LED harness through the larger hole of the supplied plastic wire guide/grommet.
6. Pass the connector end of the harness through the back of the taillight housing.
7. Attach the plastic connector on the supplied harness to the LED array.
8. Attach the green ground wire to one of the studs on the back of the LED array.
9. Pass the supplied plastic wire guide/grommet over the stud protruding from the LED array.
10. The supplied plastic wire guide/grommet is eccentric so turn it slightly so the stainless steel bracket aligns with the holes in the housing.
11. Attach the nut to the stud to secure the supplied plastic wire guide/grommet. Do not over tighten. This nut only retains the supplied plastic wire guide/grommet.
12. Reassemble the taillight.
13. **Wiring.** Using the supplied connectors, connect the wire from the taillight circuit to the black wire on the supplied harness. To use the connector: put both wires in a separate hole, unstripped. Holding the wires as far in as possible, squeeze the connector with pliers. Some "goo" may come out of the connector. This "goo" ensures a watertight connection. Repeat by connecting the wire from the brake light circuit on your car to the red wire on the supplied harness. If your car is fiberglass, the housing must be grounded.
14. Repeat for the other side.
15. Reconnect the battery.
16. Test both STOP and taillight functions.
17. Enjoy!

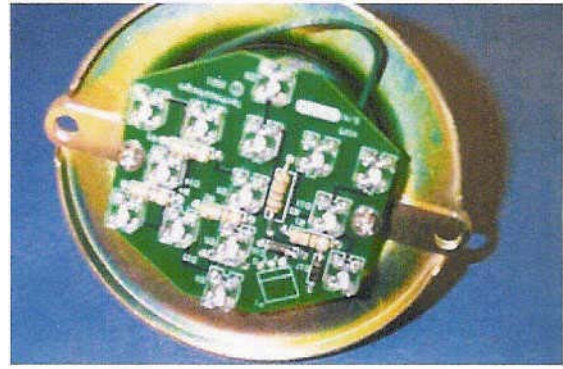
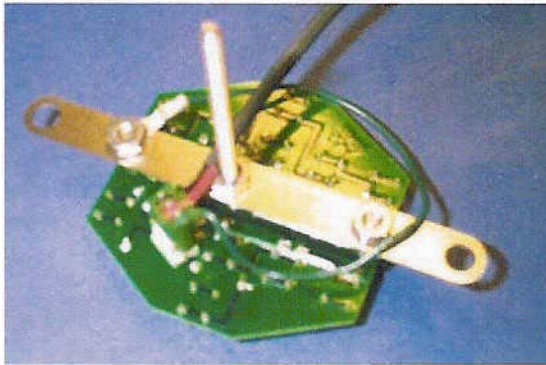
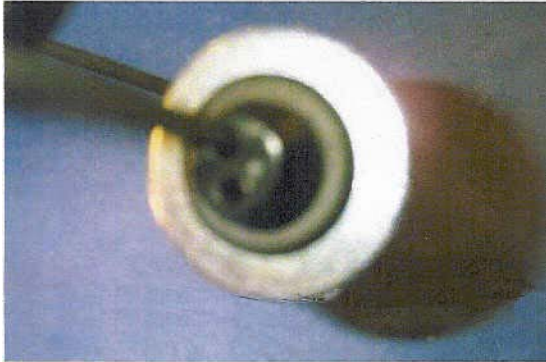


513-607-5617

sales@shiny-hiney.com

www.shiny-hiney.com

1950 Pontiac Installation Photo Reference



513-607-5617
sales@shiny-hiney.com

www.shiny-hiney.com